



Super-automatic electric no contact leverless tire changer

Contactless tire changer works with a totally electric-mechanic system, suitable for fitting/removing all kinds of passenger car and LCV tyres. Fully automatic no contact leverless tire changer 12" - 30" for top professional tire specialists, servicing run flat and UHP tyres with no tool / rim contact.

Description

XBoss super-automatic no contact leverless tire changer represents a further significant step of tire changers' evolution. It's based on patented **SA FAST** system (SAfe on wheel FAST on work) and embodies the best of Giuliano technologies.

Designed with these guidelines, the new XBoss tire-changer offers a unique, incredibly advanced and most innovative Giuliano experience yet: it's enough just to set tire position before starting operations by means of two laser pointers (**Twin Lasers**). Once position is set, all functions are automatic in sequence, thanks to our **TriTool** system consisting of three independent mounting/demounting tools.

Equipped with **XTool**, a real no contact leverless tire demount device (Giuliano exclusive patent). No matter which kind of tire you are working with, thanks to XTool the procedure is always the same with conventional, run-flat, or "extreme" UHP low profiled tires.

All working tools and devices are powered by **motoinverter** system, extremely precise, and powerful.

The arc movement of the bead loosener disks allows the disks to work purposely in misaligned position with the center hole of the rim (Center Driven Concept), thereby ensuring a better and faster penetration of the disks towards the center of the rim during the normal clockwise rotation and reducing the bead breaking time at a single turn.

XBoss tire-changer is suitable for fitting/removing all kinds of passenger car and LCV tires from 12" to 30" (max. wheel diam. 1200 mm./47", max. wheel width 406 mm./16") and it is recommended for top professional tire specialists, servicing run flat and UHP tires with no tool/rim contact.

Functions

- Double arm/disk bead breaker system, powered by motoinverter;
- Bead loosener disks are slightly but purposely misaligned with the rim center for a better and faster penetration and immediate bead loosening, **Center Driven Concept** (Giuliano **patent**);
- Equipped with **TriTool** system, synchronized tool movements for both mounting and demounting (**patent pending**);
- Double rotation speed by pedal and motoinverter;
- **Patented SMART LOCK** ultra-quick wheel clamping system, through cone and shaft with **Smart Lock** nut;
- All movements powered by motoinverter;
- **XTool** no contact leverless tire demount device (Giuliano **patent**);
- Wheel positioning through motorized clamping chuck and laser pointers (**patent pending**);
- Tire inflation by pedal (standard);
- Operated by pedal and control console with joysticks;
- Equipped with **BP1 Plus** bead pressing arm (standard) complete with self-storage function (Giuliano **patent**);
- Equipped with Lifter (standard);
- Suitable for Tubeless tire bead seating system (optional).

WDK: Version available upon request

Giuliano Industrial S.p.A.

The information contained in this document is the sole property of Giuliano Automotive. The document is NOT authentic if it has been downloaded from a website different from www.giuliano-automotive.com.

Standard Features

Rim clamping range	12" - 30"
Max. tire diameter	1200 mm (47")
Max. tire width	406 mm (16") <small>For reverse mounted wheels, variable according to rim features</small>
Max. wheel weight	80 Kg
Bead loosener force	6860 N (700 Kg)
Operating pressure	8-10 bar (116-145 Psi)
Power supply	220V - 1ph
Motors power	0,75 kW / 2 speed
Balancing speed	7 - 16 rpm
Pre-set tire inflating pressure	3,5 bar (50 Psi)
Net weight	640 Kg
Dimensions (WxDxH)	1800 x 1850 x 1750 mm



WL 4 (9240910)
Pneumatic wheel positioner.



Plastic protections for Smart Lock centering cone



Rubber protections for clamping chuck



Plastic protections for clamping chuck driving pin



Plastic cone Ø 70 mm for clamping special alloy rims



Reduction ring for clamping chuck. To be used to fit particular alloy rims



Rubber protector for steel rims. (marked with •)



Rubber protector for aluminium rims (marked with ••)



Rubber protector for aluminium rims with arched spokes. (marked with •••)



Adjustment knob for SMART LOCK



Plastic bead pressing clamp with extra insert for rim edge with special inclination. To be used together with rubber protections for mounting UHP and RUNFLAT tyre according to WDK rules.



Air lubricator, air filter/water trap



Cleaning brush for SMART LOCK and clamping chuck inner surface



Plastic tire lever. To be used during tire demounting in accordance with the WDK procedure.



Brush



LB (9216805)
Lube paste bucket, 5 kg.



TPP 3 (9240644)
Kit of nylon protectors for mounting/demounting tool



Work gloves



FRR QUICK (9241446)

The new FRR QUICK wheel clamping adaptor has been designed by Giuliano engineers in order to ensure the safest, fastest, easiest and most effortless way to clamp reverse mounted wheels and plastic clad rims onto the standard clamping chuck. Reverse/clad...

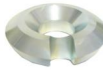
9219117

Truck cone kit, allows clamping VANs and LCVs wheels with center hole diameter from 120 to 190 mm.



9244327

Wheel clamping kit for FRR QUICK wheel clamping adaptor, allows clamping wheels with no center hole.



LTK5 (9234456)

Double face cone for light trucks, allows clamping VANs and LCVs wheels with center hole diameter from 75 to 145 mm.



LTK6 (9233680)

Cone for steel rims with low thickness and center hole diameter from 75 to 120 mm



G-CLAMP (9217471)

G-CLAMP Set. Helps adding extra bead-pressure points on top bead while assembling it. Kit includes 2 regular and 2 extra-size G-clamps.



TPP 3 (9240644)

Kit of nylon protectors for mounting/demounting tool



T1 (9217472)

Kit of 4 rubber protections for steel rims.



T2 (9217473)

Kit of 4 rubber protections for aluminium rims.



T3 (9217474)

Kit of 4 rubber protectors for aluminium rims with arched spokes.



LB (9216805)

Lube paste bucket, 5 kg.



P-Bar (9234455)

Plastic tire lever for soft tires removing operations. To be used during tire demounting in accordance with the WDK procedure.



CPP 2 (9233318)

Kit of 10 ABS protections for cone.



FPP 1 (9234454)

Kit of 10 rubber protections for clamping chuck faceplate



GUN 2 (9242246)

Tubeless inflation external kit.



HD (9208633)

Manual bead depressor.



PAD (9237711)

Manual bead depressor with extendable travelling pad.



UHP5 (9240578)

Kit Run Flat UHP



SPK 1 (Lamborghini) (9241383)

NYLON CONE FOR SPECIAL LAMBORGHINI WHEELS, allows clamping wheels with center hole diameter from 55 to 85 mm.



SPK 2 (Porsche) (9239459)

NYLON CONE FOR SPECIAL PORSCHE WHEELS, allows clamping wheels with center hole diameter from 60 to 85 mm.



SPK 3 (BMW) (9241717)
NYLON CONE FOR SPECIAL BMW WHEELS,
allows clamping wheels with center hole
diameter from 55 to 70 mm.



CPC (9214251)
Pressing cone for clamping RUN FLAT tires
from outside.



LTK2 (9247902)
Truck cone kit, allows clamping VANs and LCVs
wheels with center hole diameter from 190 to
220 mm.



LTK3 (9247900)
Truck cone kit, allows clamping VANs and LCVs
wheels with center hole diameter from 120 to
190 mm.



FRB (9224675)
FRB is a special wheel centering kit, developed
to easily and quickly clamp BMW wheels on
Giuliano center post tyre changer, as required
by BMW. BMW, particularly attentive to the
stability of the clamping and the protection of
rims and tyres, requires...



Scan QR code to go to product web page



Giuliano Industrial S.p.A.

via Guerrieri 6

Correggio (RE)

Italy

+39 0522 731111

+39 0522 633198

<https://www.giuliano-automotive.com>



Social Network



Facebook



YouTube



Twitter



www.giuliano-automotive.com