

**Tire balancer 3D with TFT HD monitor, touchless sonar, laser line and led light**

Wheel balancer 3D with TFT HD monitor. All data entered automatically, laser-guided weight placement, LED light on working area. The best choice for high volume tire shops using high performance and efficient products. Integrated sonar, large weight tray, wheel guard, pedal wheel brake, complete with wheel centering accessories. Precise, reliable, and easy-to-use software. Complete with all working programs for steel and alu wheels, including special programs for an easier and faster balancing cycle. Updated software for a great user experience.

Description

Digital electronic 3D tire balancer with TFT HD monitor, touchless sonar, laser line and LED light.

Super-automatic 3D data entry via distance and diameter gauge and touchless sonar for rim width (without manual rim width caliper). Precise, reliable, and easy-to-use software. All data is entered automatically, laser-guided weight placement eliminates any possibility of human error. Complete with all working programmes for steel and alu wheels, including special programmes for an easier and faster balancing cycle. All electronic components are manufactured in Italy. The best choice for high-volume tire shops using high-performance and efficient products.

Eye-catching graphics, bright and colorful TFT display, updated software for a great user experience.

Features

- Flat screen HD color video monitor 19" TFT, stunning graphics.
- Automatic measuring of wheel diameter and distance.
- Automatic measuring of wheel width by touchless SONAR (LA).
- Automatic START and STOP.
- Pedal brake.
- Static and dynamic balancing.
- Huge combination of ALU programs.
- "No Wheel Needed" (NWN) system for calibrating gauges, without need for any sample wheel.
- Special Alu-S Programs. Programs for selecting the best correction planes for any kind and shape of alloy rim.
- Hidden weight. Fast & Easy Split (FES) function is the fastest method on the market to split balancing weights behind the spokes of your aluminum wheel.
- OPTIMACH Software (optimization of the unbalance between rim and tire).
- Self-diagnosis.
- Self-calibration.
- Opposite Weight function (OPF), enables to place the balancing stick-on weight on the lower inside part of the aluminum wheel (at 6:00).
- Self-Selection Mode. Self-recognition of the Working program.
- Optimization of static unbalance.
- CLIP system for application of stick-on weight.
- Complete with cones and quick clamping ring nut.
- Complete with Wheel guard.
- Laser line for exact positioning of adhesive weights.
- LED light on working area.
- Eye-catching graphics, updated software for a great user experience.
- Advanced software for further upgrades.
- USB port for firmware updating via pen-drive.
- A very practical Wheel Lifter reduces effort and increases productivity (optional).

Giuliano Industrial S.p.A.

Standard Features

| | |
|--------------------------|----------------------------|
| Max. wheel weight | 75 kg |
| Max. tire diameter | 1100 mm |
| Rim diameter | 10"-30" / 255-765 mm |
| Rim width | 1.5"-20" / 40-510 mm |
| Power supply | 230V - 1ph (50/60) Hz |
| Unbalance detection time | 4.7s (5 3/4 "x 14") 15 Kg |
| Rotating speed | < 150 rpm |
| Balancing precision | ÷ 1 g |
| Net weight with guard | 102 kg |
| Max overall dimensions | 1350 x 1150 x 1440÷1540 mm |



Wheel guard



Cones and quick clamping ring nut



Counterweight pliers



Manual gauge for measuring wheel rim width



LA (9344869)

LA sonar for automatic measuring of wheel width. Only for:

- S 800;
- S 820;
- S 830;



UNILUG (9342855)
Wheel clamping adaptor for wheels without central hole or with special flanging



9342856
Kit of 5 quick-lock centering stud bolts for Unilug

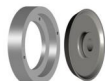


x 5

9342860
Set of 5 extra-long spherical nuts for Unilug



9342861
Clamping cone with spacer for SUV and 4WD wheels; central hole diam. 122-174 mm



9342862
Clamping cone with spacer for clamping wheels of LCVs and vans; central hole diam. 198-225 mm



9342863
Special cone for clamping wheels from outside; central hole diam. 100-118 mm



9342867
Spacer kit for clamping SUV or 4WD all terrain wheels, to prevent the wheel from touching wheelbalancer baseframe.



QUICKPLATE (9342864)
Wheel clamping adaptor with flange and 4 centering stud bolts, for wheels with max. 4 lug holes



QUICKPLATE (9342865)
Wheel clamping adaptor with flange and 5 centering stud bolts, for wheels with max. 5 lug holes



QUICKPLATE (9342866)
Wheel clamping adaptor with flange and 6 centering stud bolts, for wheels with max. 6 lug holes



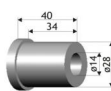
RL (9314901)
RL protective sleeve for alloy rims.



WBL81 (9437137)
WBL81 wheel lift for all Giuliano wheel balancers. Designed and built in Italy. New state of the art technology enables the wheel lift to be installed on almost all wheel balancers in the market. Easy positioning and centering on the shaft, without any...



PROBIKE EKO KIT (9341191)
Clamping adaptor for motorcycle wheels. Complete with 14 mm diam. shaft. and Quick Fix quick clamping device



9342850
Set of 28 mm centering rings for Probike Eco Kit with 14 mm diam. shaft



9342851
19 mm diam. shaft with complete set of centering rings, adaptors and Quick Fix quick clamping device, for ProBike Eco



PROFI KIT (9342852)
Set of special adaptors for 19 mm diam. shaft on ProBike Eco



9342853
10 mm diam. shaft with adaptors, for ProBike Eco



Scan QR code to go to product web page



Giuliano Industrial S.p.A.

via Guerrieri 6

Correggio (RE)

Italy

+39 0522 731111

+39 0522 633198

<https://www.giuliano-automotive.com>



Social Network



Facebook



YouTube



Twitter



Giuliano Industrial S.p.A.