

**High performance super-automatic lever - no lever tilt back tyre changer with combined two assist arms**

High performance super automatic lever - no lever tilt back tyre changer with combined two assist arms, specially designed for low profiled and UHP tyres, ideal for tyre specialists; suitable for wheels with rim from 10" to 28" (max. wheel diameter 1120 mm./44", max. wheel width 406mm./16").

**Description**

High performance super-automatic lever - no lever tyre changer, specially designed for low profiled and UHP tyres, ideal for tyre specialists; suitable for car wheels with rim from 10" to 28" (max. wheel diameter 1120 mm./44", max. wheel width 406mm./16"). Turntable with double-cylinder, adjustable clamps positioning and pedal operated two speed bidirectional rotation system. Equipped with combined two assist arms for easy mounting/demounting tyres. Equipped with Lever-No Lever technology that combines the advantages of "leverless" device to those of a standard mount/demount tool.

**Functions**

- Tilting tower, sliding horizontal arm with  $\varnothing$  41 mm operating arm;
- Bead breaker double effect Cylinder  $\varnothing$  200 mm;
- Reinforced Chassy and tower;
- Equipped with **Lever - No Lever** tyre mounting/demounting system (**Giuliano Patent**);
- Tabletop thickness 14 mm w/adjust. jaws (**Giuliano Patent**);
- Double rotation speed by pedal;
- **Tyre inflation** by pedal (standard);
- **Patented SBS System** for bead breaker shovel travel memory;
- Equipped with Help and Press Arm (standard)
- Suitable for **Tubeless tyre** bead seating system (optional);
- "Easy Access" extractable pedal box for quick service;
- Adjustable bead breaker shovel angle;
- **QuadraLock** system for total stiff locking of horizontal and operating arm;
- PO System, **Giuliano patent**, for granting no BB shovel stuck into the rim;
- **Robotic pipe** for operating arm positioning/lock;
- Suitable for Wheel Lifter (optional).

WDK: Version available upon request

**Giuliano Industrial S.p.A.**

The information contained in this document is the sole property of Giuliano Automotive. The document is NOT authentic if it has been downloaded from a website different from [www.giuliano-automotive.com](http://www.giuliano-automotive.com).

## Standard Features

Rim clamping range from outside	10" - 26" By adjustable jaws
Rim clamping range from inside	12" - 28" By adjustable jaws
Max. tyre diameter	1120 mm (44")
Max. tyre width	406 mm (16")
Bead breaker cylinder force at 10 Bar	30800 N
Operating pressure	10 bar (145 psi)
Power supply	400V - 3ph / 2 speed 220V - 1ph 220V - 1ph / 2 speed
Motor power	0,8 / 1,1 kW (3 ph)
Balancing speed	7-14 rpm
Pre-set tyre inflating pressure	3,5 bar (50 psi)
Net weight	424 Kg
Max overall dimensions	2000x1940x2190 mm

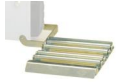


Standard accessories



**Lever NoLever** (STD\_LNL)

LeverNoLever tyre mounting/demounting device, GIULIANO patent, can work either with or without a bead lifting lever, so you can decide which is the most effortless way to operate on specific tyre applications.



**ROLL** (9241924)

Fixed roller plate, to ease bead breaking of heavy wheels.



**G-CLAMP** (9217471)  
G-CLAMP Set. Helps adding extra bead-pressure points on top bead while assembling it. Kit includes 2 regular and 2 extra-size G-clamps.



**RJP** (9236282)  
Kit of rubber coated jaw protectors.



**T1** (9217472)  
Kit of 4 rubber protections for steel rims.



**T2** (9217473)  
Kit of 4 rubber protections for aluminium rims.



**T3** (9217474)  
Kit of 4 rubber protectors for aluminium rims with arched spokes.



**LB** (9216805)  
Lube paste bucket, 5 kg.



**WL 6** (9242824)  
Pneumatic wheel lifter for passenger car type changers with foot control for the ascent and descent of the wheel. Pneumatic wheel lifter for car tyre changer: facilitates the positioning of the wheel on the tyre changer. Foot control for the ascent...



**GUN 1** (9236658)  
Tubeless inflation external kit.



**ORJP** (9216166)  
Kit of rubber protections for clamping rims from inside using conventional jaws.



**MOTO-AD** (9235081)  
Kit of 4 motorcycle wheels clamping adaptors, 6" - 24", with screw lock.



**ATV-AD** (9235082)  
Kit of 4 clamping adaptors for HARLEY DAVIDSON wheels, oversize height, 6" - 24", with screw lock.



**HD** (9208633)  
Manual bead depressor.



**PAD** (9237711)  
Manual bead depressor with extendable travelling pad.



**UHP1** (9240576)  
Kit Run Flat UHP



Scan QR code to go to product web page



**Giuliano Industrial S.p.A.**

via Guerrieri 6

Correggio (RE)

Italy

+39 0522 731111

+39 0522 633198

<https://www.giuliano-automotive.com>



**Social Network**



Facebook



YouTube



Twitter



**Giuliano Industrial S.p.A.**