



PAR-MOVE concept high performance super-automatic LEVER - NO LEVER tyre changer with combined two assist arms

Super automatic tyre changer for wheels with rim from 10" to 28" (max. wheel diameter 1200 mm./47", max. wheel width 406mm./16"). Equipped with two assist arms and LeverNoLever tyre mounting/demounting system it's suggested for top professional tyre specialists, and high volume tyre shops, servicing all kinds of car, racing, run flat and UHP tyres.

Description

High performance super automatic lever-no-lever tyre changer with combined two assist arms for wheels with rim from 10" to 28" (max. wheel diameter 1200 mm./47", max. wheel width 406mm./16").

Functions

- Robust fixed vertical tower with innovative parallelogram operating arm (**PAR-MOVE Concept**);
- Bead breaker double effect Cylinder Ø 200 mm;
- Reinforced Chassis. Fixed vertical tower and parallelogram operating arm makes SX 120 PRO DUO LNL extremely robust and stiff, granting increased rigidity and eliminating all flexes;
- Tabletop thickness 14 mm w/POWER X four cylinders clamping system (**Giuliano Patent**);
- **Lever - No Lever** tyre mounting/demounting system, **Giuliano patent** with combined option through patented Lever - No Lever device;
- Double rotation speed by pedal (motoinverter);
- Tyre inflation by pedal (standard);
- **Patented SBS System** for bead breaker shovel travel memory. Adjustable bead breaker shovel angle;
- **PO System, Giuliano patent**, for granting no bead breaker shovel stuck into the rim during bead breaking operations;
- Equipped with **BP1 Plus bead pressing arm (standard)**, complete with self-storage function, **Giuliano patent**;
- Equipped with **Help 120 additional pneumatic helper tower** and Box 120 Tools Storage Box (**standard**);
- Suitable for Wheel Lifter and tubeless tyre bead seating system (optional).

Giuliano Industrial S.p.A.

Standard Features

Rim clamping range from outside	10" - 26"
Rim clamping range from inside	12" - 28"
Max. tyre diameter	1200 mm (47")
Max. tyre width	406 mm (16")
Bead breaker cylinder force at 10 Bar	30800 N (3140 Kg)
Operating pressure	8-10 bar (116-145 psi)
Power supply	220V 1ph 50/60 Hz
Motor power	0,75 kW (with motoinverter)
Balancing speed	8-16 rpm
Pre-set tyre inflating pressure	3,5 bar (50 psi)
Net weight	434 Kg
Max overall dimensions	1760x1250x2200 mm



Standard accessories

**BP1 PLUS** (9242442)

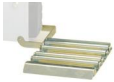
Bead pressing arm, complete with selfstorage function, **GIULIANO patent**.

**HELP 120** (9242435b)

Additional pneumatic helper tower for fitting/removing low-profiled and UHP tyres. Equipped with an additional tilting roller tool for lower bead.

**BOX 120** (9242982)

Tools Storage Box

**ROLL** (9241924)

Fixed roller plate, to ease bead breaking of heavy wheels.

**Lever NoLever** (STD_LNL)

LeverNoLever tyre mounting/demounting device, GIULIANO patent, can work either with or without a bead lifting lever, so you can decide which is the most effortless way to operate on specific tyre applications.

**G-CLAMP** (9217471)

G-CLAMP Set. Helps adding extra bead-pressure points on top bead while assembling it. Kit includes 2 regular and 2 extra-size G-clamps.

**RJP** (9236282)

Kit of rubber coated jaw protectors.

**T1** (9217472)

Kit of 4 rubber protections for steel rims.

**T2** (9217473)

Kit of 4 rubber protections for aluminium rims.

**T3** (9217474)

Kit of 4 rubber protectors for aluminium rims with arched spokes.

**LB** (9216805)

Lube paste bucket, 5 kg.

**WL 6** (9242824)

Pneumatic wheel lifter for passenger car type changers with foot control for the ascent and descent of the wheel. Pneumatic wheel lifter for car tyre changer: facilitates the positioning of the wheel on the tyre changer. Foot control for the ascent...

**GUN 4** (9235561)

Tubeless inflation external kit

**ORJP** (9216166)

Kit of rubber protections for clamping rims from inside using conventional jaws.

**MOTO-AD** (9235081)

Kit of 4 motorcycle wheels clamping adaptors, 6" - 24", with screw lock.

**ATV-AD** (9235082)

Kit of 4 clamping adaptors for HARLEY DAVIDSON wheels, oversize height, 6" - 24", with screw lock.

**HD** (9208633)

Manual bead depressor.

**PAD** (9237711)

Manual bead depressor with extendable travelling pad.

**UHP1** (9240576)

Kit Run Flat UHP



Scan QR code to go to product web page



Giuliano Industrial S.p.A.

via Guerrieri 6

Correggio (RE)

Italy

+39 0522 731111

+39 0522 633198

<https://www.giuliano-automotive.com>



Social Network



Facebook



YouTube



Twitter



Giuliano Industrial S.p.A.

The information contained in this document is the sole property of Giuliano Automotive. The document is NOT authentic if it has been downloaded from a website different from www.giuliano-automotive.com.