

**High Performance Super Automatic Tilt Back Tyre Changer with Dual Assist Arm**

Super-automatic tilt back tyre changer for tyres with rim from 10" to 28" (max. wheel diameter 1120 mm./44", max. wheel width 406mm./16"). Equipped with dual assist arm for easy mounting/demounting tyres.

**Description**

Super-automatic tilt back tyre changer for tyres with rim from 10" to 28" (max. wheel diameter 1120 mm./44", max. wheel width 406mm./16"). Equipped with HP2 dual assist arm for easy mounting/demounting tyres and with Power X four cylinders turntable. SX 234 is the state of the art conventional tyre changer, developed by Giuliano for high volume tyre shops, and tyre specialists, servicing racing, run flat and UHP tyres, that is, for all tyre professionals, who have to deal with most diverse tyres every day, but want to work with simplicity and without efforts.

**Functions**

- Tilting tower, sliding horizontal arm with  $\varnothing$  41 mm operating arm;
- Bead breaker double effect Cylinder  $\varnothing$  200 mm;
- Reinforced Chassy and tower;
- Tabletop thickness 12 mm w/POWER X 4 cylinders clamping system;
- Fitting head designed for both **standard and low profiled tyre** applications;
- Double rotation speed by pedal;
- **Tyre inflation** by pedal (standard);
- **Patented** SBS System for bead breaker shovel travel memory;
- Equipped with HP2 **dual assist arm** (standard) and storage box;
- Suitable for **Tubeless tyre** bead seating system (optional);
- "Easy Access" extractable pedal box for quick service;
- Adjustable bead breaker shovel angle;
- **QuadraLock** system for total stiff locking of horizontal and operating arm;
- PO System, **Giuliano patent**, for granting no BB shovel stuck into the rim;
- **Robotic pipe** for operating arm positioning/lock;
- Suitable for Tyre Lift (optional).

WDK: Version available upon request

**Giuliano Industrial S.p.A.**

The information contained in this document is the sole property of Giuliano Automotive. The document is NOT authentic if it has been downloaded from a website different from [www.giuliano-automotive.com](http://www.giuliano-automotive.com).

## Standard Features

Rim clamping range from outside	10" - 26"
Rim clamping range from inside	12" - 28"
Max. tyre diameter	1120 mm (44")
Max. tyre width	406 mm (16")
Bead breaker cylinder force at 10 Bar	30800 N
Operating pressure	10 bar (145 Psi)
Power supply	400V - 3ph / 2 speed 220V - 1ph 220V - 1ph / 2 speed
Motor power	0,8/1,1 kW (3ph)
Rotating speed	7-14 rpm
Pre-set tyre inflating pressure	3,5 bar (50 Psi)
Net weight	390 Kg
Max overall dimensions	1710 x 1940 x 2190 mm



Standard accessories



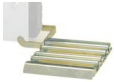
**PED-G** (9236373)  
Pedal operated inflating device.



**HP2** (9219399)  
HP2 additional double arm to ease mounting operations of low profiled and UHP tyres.



**AWF** (9213425)  
Air filter with pressure regulator and CE manometer.



**ROLL** (9241924)  
Fixed roller plate, to ease bead breaking of heavy wheels.



**G-CLAMP** (9217471)  
G-CLAMP Set. Helps adding extra bead-pressure points on top bead while assembling it. Kit includes 2 regular and 2 extra-size G-clamps.



**RJP** (9236282)  
Kit of rubber coated jaw protectors.



**T1** (9217472)  
Kit of 4 rubber protections for steel rims.



**T2** (9217473)  
Kit of 4 rubber protections for aluminium rims.



**T3** (9217474)  
Kit of 4 rubber protectors for aluminium rims with arched spokes.



**LB** (9216805)  
Lube paste bucket, 5 kg.



**GUN 1** (9236658)  
Tubeless inflation external kit.



**ORJP** (9216166)  
Kit of rubber protections for clamping rims from inside using conventional jaws.



**MOTO-AD** (9235081)  
Kit of 4 motorcycle wheels clamping adaptors, 6" - 24", with screw lock.



**ATV-AD** (9235082)  
Kit of 4 clamping adaptors for HARLEY DAVIDSON wheels, oversize height, 6" - 24", with screw lock.



**QCK** (9208996)  
Quick release kit for mounting tools (includes one plastic tool and one hub for connecting the tool delivered with the tyre-changer).



**SHS** (9209086)  
Mounting/demounting tool for soft tyres on steel wheels, including hub for connection to quick release kit (**QCK**)



**AHS** (9213611)  
Mounting/demounting tool for arched spokes rims, including hub for connection to quick release kit (**QCK**).



**EHS** (9235009)  
Mounting/demounting tool for iron wheels with projecting central hub, including hub for connection to quick release kit (**QCK**)



**GHS** (9212850)  
Mounting tool for 6"-12" wheels with operating arm extension.



**QX** (9243338)  
QX is a leverless mount/demount device, suitable for conventional, UHP and Run Flat tyres. Exclusive GIULIANO **Patent**, it works in the same exact way of your traditional tyre bar, but **without operator's manual force....**



**QXHS** (9230814)  
Kit of **QX** adaptors for connection to quick release kit (**QCK**).



**HD** (9208633)  
Manual bead depressor.



**PAD** (9237711)  
Manual bead depressor with extendable travelling pad.



**UHP2** (9240575)  
Kit Run Flat UHP



**WL 6** (9242824)

Pneumatic wheel lifter for passenger car type changers with foot control for the ascent and descent of the wheel. Pneumatic wheel lifter for car tyre changer: facilitates the positioning of the wheel on the tyre changer. Foot control for the ascent...



Scan QR code to go to product web page



**Giuliano Industrial S.p.A.**

via Guerrieri 6

Correggio (RE)

Italy

+39 0522 731111

+39 0522 633198

<https://www.giuliano-automotive.com>



**Social Network**



Facebook



YouTube



Twitter



**[www.giuliano-automotive.com](https://www.giuliano-automotive.com)**