

**Leverless center post tire changer with dual bead breaker system, equipped with patented PAR-MOVE system**

Leverless center post tire changer with dual bead breaker system and patented space-saving Par-Move tower. Recommended for top professional tire specialists, servicing run flat and UHP tires with no tool/rim contact. Equipped with bead breaker system with air-operated double arm/disk and traditional bead breaker shovel featuring patented SBS system

Description

The new S122 tire changer is the "extended" version of [S121](#), which can work either with or without bead lifting lever and does not require any additional rear space in the shop, thanks to **patented PAR-MOVE** concept, and which includes:

- Leverless tire mounting/demounting system (**Lever-No Lever** technology), **Giuliano Patent**.
- **Patented SMART LOCK** ultra-quick wheel-clamping system, through cone and shaft with Smart Lock nut. The fastest wheel-clamping system in the world!
- Motoinverter system.
- **BP1 Plus** pneumatic bead pressing arm, complete with self-storage function, **Giuliano Patent**.
- Bead breaker system with air operated double arm/disk.

S 122 tire changer is also equipped with traditional bead breaker shovel featuring **patented Smart Blade System** (SBS), to memorize both starting and finishing position of the bead breaker arm, in order to break the bead of a full set of four tires without using hands; **patented PO System** to avoid bead breaker shovel getting stuck between tire and rim; and adjustable bead breaker shovel angle for optimal performance on every tire.

The main features of PAR-MOVE series, together with its working versatility (see multiple-choice devices, such as Lever - No Lever or the dual bead breaker system) will give your customers the chance to have a tire changer with:

- A limited footprint and working area covered in the shop.
- No flex or plays due to stress on the operating tools.
- Multiple options in both mount/demount and bead-breaking operations (traditional vs. non-conventional).

S122 high performance tire changer for intensive use specially designed to handle all kinds of tyres easily and without efforts, suitable for wheels with rim from 12" to 30" (max. wheel diameter 1200 mm./47", max. wheel width 406mm./16").

Functions

- Robust fixed vertical tower with innovative parallelogram operating arm (**PAR-MOVE Concept**);
- Dual bead breaker system with air operated double arm/disk and bead breaker shovel;
- Bead breaker disks are slightly but purposely misaligned with the rim center for a better and faster penetration and immediate bead loosening, Center Driven Concept (**GIULIANO patent**);
- Reinforced Chassis. Fixed vertical tower and parallelogram operating arm makes S 122 extremely robust and stiff, granting increased rigidity and eliminating all flexes;
- Operated by pedal and control console;
- **Patented SMART LOCK** ultra-quick wheel clamping system, through cone and shaft with Smart Lock nut;
- Equipped with **Lever - NO Lever** (LNL) tire mounting/demounting system, **Giuliano Patent**, with combined option through patented Lever - NO Lever device;
- Equipped with **BP1 Plus** bead pressing arm (standard), complete with self-storage function, **GIULIANO patent**.
- Double rotation speed by pedal (motoinverter);
- **Patented Smart Blade System** for bead breaker shovel travel memory. Total bead breaker movement can be set and kept for a whole set of 4 tires, while operator won't have to use hands to help bead breaker, working in a quicker and safer way!
- Adjustable bead breaker shovel angle.
- **PO System, Giuliano patent**, for granting no bead breaker shovel stuck into the rim during bead breaking operations.
- Tire inflation by pedal (standard).
- Fixed roller plate, to ease bead breaking of heavy wheels, standard.
- Equipped with Tools Storage Box (standard).
- "Easy Access" extractable pedal box for quick service.
- Suitable for tubeless tire bead seating system (optional).
- A very practical Wheel Lifter reduces effort and increases productivity (optional).
- **5 YEAR WARRANTY** on gearbox and PAR-MOVE.
- Designed, built and engineered in Italy.
- "Right to repair" - all service parts available for at least 10 years since production, easy maintenance and reduced environmental

impact.

Standard Features

Rim clamping range	12" - 30"
Max. tire diameter	1200 mm (47")
Max. tire width	406 mm (16") <small>For reverse mounted wheels, variable according to rim features</small>
Bead loosener cylinder force at 10 Bar	11770 N (1200 Kg)
Max. wheel weight	80 Kg
Operating pressure	8-10 bar (116-145 Psi)
Power supply	220V - 1ph
Motor power	0,75 kW / 2 speed
Balancing speed	7-16 rpm
Pre-set tire inflating pressure	3,5 bar (50 Psi)
Net weight	445 Kg
Dimensions (WxDxH)	1760 x 1280 x 1770-2200 mm



Lever NoLever (STD_LNL)
LeverNoLever tire mounting/demounting device, GIULIANO patent, can work either with or without a bead lifting lever, so you can decide which is the most effortless way to operate on specific tire applications.



Bead lifting lever



Plastic tire lever. To be used during tire demounting in accordance with the WDK procedure.



Plastic protections for mounting/demounting tool



Rubber protections for clamping chuck



Plastic protections for Smart Lock centering cone



Plastic protections for clamping chuck driving pin



Plastic cone Ø 70 mm for clamping special alloy rims



Reduction ring for clamping chuck. To be used to fit particular alloy rims



Plastic bead pressing clamp with extra insert for rim edge with special inclination. To be used together with rubber protections for mounting UHP and RUNFLAT tyre according to WDK rules.



Rubber protector for steel rims. (marked with •)



Rubber protector for aluminium rims (marked with ••)



Rubber protector for aluminium rims with arched spokes. (marked with •••)



Adjustment knob for SMART LOCK



Cleaning brush for SMART LOCK and clamping chuck inner surface



Air lubricator, air filter/water trap



O rings for SMART LOCK



LB (9216805)
Lube paste bucket, 5 kg.



Brush



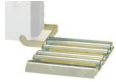
Work gloves



BP1 PLUS (9242442)
Bead pressing arm, complete with selfstorage function, **GIULIANO patent**.



BOX 120 (9242982)
Tools Storage Box



ROLL (9241924)
Fixed roller plate, to ease bead loosening of heavy wheels.



QX-AD (9232767)
QX, QX Plus adjusting tool and **LeverNoLever** System



FRR QUICK (9241446)

The new FRR QUICK wheel clamping adaptor has been designed by Giuliano engineers in order to ensure the safest, fastest, easiest and most effortless way to clamp reverse mounted wheels and plastic clad rims onto the standard clamping chuck. Reverse/clad...



LTK5 (9234456)

Double face cone for light trucks, allows clamping VANs and LCVs wheels with center hole diameter from 75 to 145 mm.



SPK 1 (Lamborghini) (9241383)

NYLON CONE FOR SPECIAL LAMBORGHINI WHEELS, allows clamping wheels with center hole diameter from 55 to 85 mm.



SPK 3 (BMW) (9241717)

NYLON CONE FOR SPECIAL BMW WHEELS, allows clamping wheels with center hole diameter from 55 to 70 mm.



T1 (9217472)

Kit of 4 rubber protections for steel rims.



T3 (9217474)

Kit of 4 rubber protectors for aluminium rims with arched spokes.



P-Bar (9234455)

Plastic tire lever for soft tires removing operations. To be used during tire demounting in accordance with the WDK procedure.



FPP 1 (9234454)

Kit of 10 rubber protections for clamping chuck faceplate



WL 4 (9245945)

Pneumatic wheel positioner.



UHP3 (9240577)

Kit Run Flat UHP



9219117

Truck cone kit, allows clamping VANs and LCVs wheels with center hole diameter from 120 to 190 mm.



LTK6 (9233680)

Cone for steel rims with low thickness and center hole diameter from 75 to 120 mm



SPK 2 (Porsche) (9239459)

NYLON CONE FOR SPECIAL PORSCHE WHEELS, allows clamping wheels with center hole diameter from 60 to 85 mm.



G-CLAMP (9217471)

G-CLAMP Set. Helps adding extra bead-pressure points on top bead while assembling it. Kit includes 2 regular and 2 extra-size G-clamps.



T2 (9217473)

Kit of 4 rubber protections for aluminium rims.



LB (9216805)

Lube paste bucket, 5 kg.



CPP 2 (9233318)

Kit of 10 ABS protections for cone.



GUN 4 (9235561)

Tubeless inflation external kit



PAD (9237711)

Manual bead depressor with extendable travelling pad.



9244327

Wheel clamping kit for FRR QUICK wheel clamping adaptor, allows clamping wheels with no center hole.



TPP 4 (9234452)
Kit of 10 rear plastic protections, for **QX**, **QX Plus** and **LeverNoLever** System



TPP 5 (9234453)
Kit of 10 front plastic protections, for **QX** and **QX Plus** and **LeverNoLever** System



LTK2 (9247902)
Truck cone kit, allows clamping VANs and LCVs wheels with center hole diameter from 190 to 220 mm.



LTK3 (9247900)
Truck cone kit, allows clamping VANs and LCVs wheels with center hole diameter from 120 to 190 mm.



FRB (9224675)
FRB is a special wheel centering kit, developed to easily and quickly clamp BMW wheels on Giuliano center post tyre changer, as required by BMW. BMW, particularly attentive to the stability of the clamping and the protection of rims and tyres, requires...



Scan QR code to go to product web page



Giuliano Industrial S.p.A.

via Guerrieri 6

Correggio (RE)

Italy

+39 0522 731111

+39 0522 633198

<https://www.giuliano-automotive.com>



Social Network



Facebook



YouTube



Twitter



Giuliano Industrial S.p.A.

The information contained in this document is the sole property of Giuliano Automotive. The document is NOT authentic if it has been downloaded from a website different from www.giuliano-automotive.com.