



High Performance Super Automatic Tilt Back Tire Changer with Dual Assist Arm

Super-automatic tilt back tire changer for tires with rim from 10" to 28" (max. wheel diameter 1120 mm./44", max. wheel width 406mm./16"). Equipped with dual assist arm for easy mounting/demounting tires.

Description

Super-automatic tilt back tire changer for tires with rim from 10" to 28" (max. wheel diameter 1120 mm./44", max. wheel width 406mm./16"). Equipped with HP2 dual assist arm for easy mounting/demounting tires and with Power X four cylinders turntable. SX 234 is the state of the art conventional tire changer, developed by Giuliano for high volume tire shops, and tire specialists, servicing racing, run flat and UHP tires, that is, for all tire professionals, who have to deal with most diverse tires every day, but want to work with simplicity and without efforts.

Functions

- Tilting tower, sliding horizontal arm with \varnothing 41 mm operating arm;
- Bead loosener double effect Cylinder \varnothing 200 mm;
- Reinforced Chassy and tower;
- Tabletop thickness 12 mm w/POWER X 4 cylinders clamping system;
- Fitting head designed for both **standard and low profiled tire** applications;
- Double rotation speed by pedal;
- **Tire inflation** by pedal (standard);
- **Patented** SBS System for bead loosener shovel travel memory;
- Equipped with HP2 **dual assist arm** (standard) and storage box;
- Suitable for **Tubeless tire** bead seating system (optional);
- "Easy Access" extractable pedal box for quick service;
- Adjustable bead loosener shovel angle;
- **QuadraLock** system for total stiff locking of horizontal and operating arm;
- PO System, **Giuliano patent**, for granting no BB shovel stuck into the rim;
- **Robotic pipe** for operating arm positioning/lock;
- Suitable for Tire Lift (optional).

WDK: Version available upon request

Giuliano Industrial S.p.A.

Standard Features

Rim clamping range from outside	10" - 26"
Rim clamping range from inside	12" - 28"
Max. tire diameter	1120 mm (44")
Max. tire width	406 mm (16")
Bead loosener cylinder force at 10 Bar	30800 N
Operating pressure	10 bar (145 Psi)
Power supply	400V - 3ph / 2 speed 220V - 1ph 220V - 1ph / 2 speed
Motor power	0,8/1,1 kW (3ph)
Rotating speed	7-14 rpm
Pre-set tire inflating pressure	3,5 bar (50 Psi)
Net weight	390 Kg
Max overall dimensions	1710 x 1940 x 2190 mm



Standard accessories



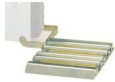
PED-G (9236373)
Pedal operated inflating device.



HP2 (9219399)
HP2 additional double arm to ease mounting operations of low profiled and UHP tires.



AWF (9213425)
Air filter with pressure regulator and CE manometer.



ROLL (9241924)
Fixed roller plate, to ease bead loosening of heavy wheels.



G-CLAMP (9217471)
G-CLAMP Set. Helps adding extra bead-pressure points on top bead while assembling it. Kit includes 2 regular and 2 extra-size G-clamps.



RJP (9236282)
Kit of rubber coated jaw protectors.



T1 (9217472)
Kit of 4 rubber protections for steel rims.



T2 (9217473)
Kit of 4 rubber protections for aluminium rims.



T3 (9217474)
Kit of 4 rubber protectors for aluminium rims with arched spokes.



LB (9216805)
Lube paste bucket, 5 kg.



GUN 1 (9236658)
Tubeless inflation external kit.



ORJP (9216166)
Kit of rubber protections for clamping rims from inside using conventional jaws.



MOTO-AD (9235081)
Kit of 4 motorcycles adaptors with wider clamps, standard height. Suitable for any kind of car tyre changers turntable in GIULIANO range, allows easy clamping of motorcycle and scooter wheels from 6" to 23", when mounted on standard jaws.



ATV-AD (9235082)
Kit of 4 adaptors for HARLEY DAVIDSON wheels, oversize height, 6" - 24", with screw lock.



QCK (9208996)
Quick release kit for mounting tools (includes one plastic tool and one hub for connecting the tool delivered with the tire changer).



SHS (9209086)
Mounting/demounting tool for soft tires on steel wheels, including hub for connection to quick release kit (**QCK**)



AHS (9213611)
Mounting/demounting tool for arched spokes rims, including hub for connection to quick release kit (**QCK**).



EHS (9235009)
Mounting/demounting tool for iron wheels with projecting central hub, including hub for connection to quick release kit (**QCK**)



GHS (9212850)
Mounting tool for 6"-12" wheels with operating arm extension.



QX (9243338)
QX is a leverless mount/demount device, suitable for conventional, UHP and Run Flat tires. Exclusive GIULIANO **Patent**, it works in the same exact way of your traditional tire bar, but **without operator's manual force....**



QXHS (9230814)
Kit of **QX** adaptors for connection to quick release kit (**QCK**).



HD (9208633)
Manual bead depressor.



PAD (9237711)
Manual bead depressor with extendable travelling pad.



UHP2 (9240575)
Kit Run Flat UHP



WL 6 (9242824)

Pneumatic wheel lifter for passenger car type changers with foot control for the ascent and descent of the wheel. Pneumatic wheel lifter for car tire changer: facilitates the positioning of the wheel on the tire changer. Foot control for the ascent...



Scan QR code to go to product web page



Giuliano Industrial S.p.A.

via Guerrieri 6

Correggio (RE)

Italy

+39 0522 731111

+39 0522 633198

<https://www.giuliano-automotive.com>



Social Network



Facebook



YouTube



Twitter



www.giuliano-automotive.com