



High Performance Super Automatic Lever - No Lever Tilt Back Tyre Changer with Dual Assist Arm

Super-automatic lever - no lever tilt back tyre changer for tyres with rim from 10" to 28" (max. wheel diameter 1120 mm./44", max. wheel width 406mm./16"). Equipped with dual assist arm for easy mounting/demounting tyres.

Description

Super-automatic lever - no lever tilt back tyre changer for tyres with rim from 10" to 28" (max. wheel diameter 1120 mm./44", max. wheel width 406mm./16"). Equipped with HP2 dual assist arm for easy mounting/demounting tyres and with Power X four cylinders turntable.

SX 234 L-N-L is the state of the art conventional tyre changer, developed by Giuliano for high volume tyre shops, and tyre specialists, servicing racing, run flat and UHP tyres, that is, for all tyre professionals, who have to deal with most diverse tyres every day, but want to work with simplicity and without efforts. Equipped with Lever-No Lever technology that combines the advantages of "leverless" device to those of a standard mount/demount tool.

Functions

- Tilting tower, sliding horizontal arm with \varnothing 41 mm operating arm;
- Bead breaker double effect Cylinder \varnothing 200 mm;
- Reinforced Chassy and tower;
- Equipped with **Lever - No Lever** tyre mounting/demounting system (**Giuliano Patent**);
- Tabletop thickness 12 mm w/POWER X 4 cylinders clamping system (**Giuliano Patent**);
- Double rotation speed by pedal;
- **Tyre inflation** by pedal (standard);
- **Patented** SBS System for bead breaker shovel travel memory;
- Equipped with HP2 **dual assist arm** (standard) and storage box;
- Suitable for **Tubeless tyre** bead seating system (optional);
- "Easy Access" extractable pedal box for quick service;
- Adjustable bead breaker shovel angle;
- **QuadraLock** system for total stiff locking of horizontal and operating arm;
- PO System, **Giuliano patent**, for granting no BB shovel stuck into the rim;
- **Robotic pipe** for operating arm positioning/lock;
- Suitable for Tyre Lift (optional).

WDK: Version available upon request

Giuliano Industrial S.p.A.

The information contained in this document is the sole property of Giuliano Automotive. The document is NOT authentic if it has been downloaded from a website different from www.giuliano-automotive.com.

Standard Features

Rim clamping range from outside	10" - 26"
Rim clamping range from inside	12" - 28"
Max. tyre diameter	1120 mm (44")
Max. tyre width	406 mm (16")
Bead breaker cylinder force at 10 Bar	30800 N
Operating pressure	10 bar (145 Psi)
Power supply	400V - 3ph / 2 speed 220V - 1ph 220V - 1ph / 2 speed
Motor power	0,8/1,1 kW (3ph)
Rotating speed	7-14 rpm
Pre-set tyre inflating pressure	3,5 bar (50 Psi)
Net weight	409 Kg
Max overall dimensions	1710 x 1940 x 2190 mm

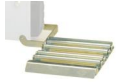


Standard accessories



Lever NoLever (STD_LNL)

LeverNoLever tyre mounting/demounting device, GIULIANO patent, can work either with or without a bead lifting lever, so you can decide which is the most effortless way to operate on specific tyre applications.



ROLL (9241924)

Fixed roller plate, to ease bead breaking of heavy wheels.



G-CLAMP (9217471)
G-CLAMP Set. Helps adding extra bead-pressure points on top bead while assembling it. Kit includes 2 regular and 2 extra-size G-clamps.



RJP (9236282)
Kit of rubber coated jaw protectors.



T1 (9217472)
Kit of 4 rubber protections for steel rims.



T2 (9217473)
Kit of 4 rubber protections for aluminium rims.



T3 (9217474)
Kit of 4 rubber protectors for aluminium rims with arched spokes.



LB (9216805)
Lube paste bucket, 5 kg.



WL 6 (9242824)
Pneumatic wheel lifter for passenger car type changers with foot control for the ascent and descent of the wheel. Pneumatic wheel lifter for car tyre changer: facilitates the positioning of the wheel on the tyre changer. Foot control for the ascent...



GUN 1 (9236658)
Tubeless inflation external kit.



ORJP (9216166)
Kit of rubber protections for clamping rims from inside using conventional jaws.



MOTO-AD (9235081)
Kit of 4 motorcycle wheels clamping adaptors, 6" - 24", with screw lock.



ATV-AD (9235082)
Kit of 4 clamping adaptors for HARLEY DAVIDSON wheels, oversize height, 6" - 24", with screw lock.



HD (9208633)
Manual bead depressor.



PAD (9237711)
Manual bead depressor with extendable travelling pad.



UHP2 (9240575)
Kit Run Flat UHP



Scan QR code to go to product web page

**Giuliano Industrial S.p.A.**

via Guerrieri 6

Correggio (RE)

Italy

+39 0522 731111

+39 0522 633198

<https://www.giuliano-automotive.com>

**Social Network**

Facebook



YouTube



Twitter

**Giuliano Industrial S.p.A.**

The information contained in this document is the sole property of Giuliano Automotive. The document is NOT authentic if it has been downloaded from a website different from www.giuliano-automotive.com.